



reismakina

**CELO**  
**apolo** **MEA**<sup>®</sup>  
Made in Germany

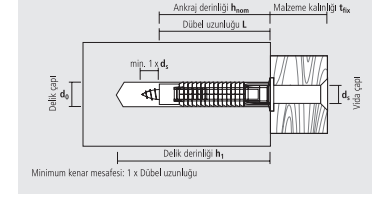
**DÜBEL ÇEŞİTLERİ**



## Nexus Dübeller

### NEXUS DÜBEL

FX Vidasız



Tip	Ürün Kodu		d <sub>0</sub> (mm)	h <sub>1</sub> ≥ (mm)	h <sub>nom</sub> ≥ (mm)	L (mm)	d <sub>s</sub> (mm)	Paket miktarı	
	yeni	eski						(kutu)	(Koli)
FX 5	95FX	500124	5	35	25	25	2,5-4	100	6000
FX 6	96FX	500126	6	40	30	30	3,5-5	100	6000
FX 8	98FX	500128	8	55	40	40	4,5-6	100	2700
FX 10	910FX	500130	10	70	50	50	6-8	50	1350
FX12	912FX	500138	12	80	60	60	8-10	25	675

### NEXUS DÜBEL

FX Yuvarlak Kutuda

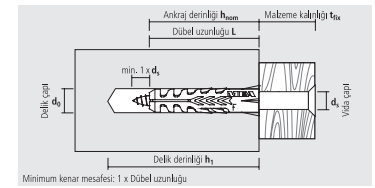


Tip	Ürün Kodu		d <sub>0</sub> (mm)	h <sub>1</sub> ≥ (mm)	h <sub>nom</sub> ≥ (mm)	L (mm)	d <sub>s</sub> (mm)	Paket miktarı	
	yeni	eski						(kutu)	(Koli)
FX 6	96EXPFX	-	6	40	30	30	3,5-5	300	10
FX 8	98EXPFX	-	8	55	40	40	4,5-6	125	10
FX 10	910EXPFX	-	10	70	50	50	6-8	70	10

## Standart Dübeller

### STANDART DÜBEL

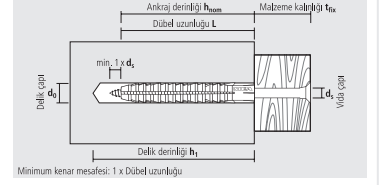
F Vidasız



Tip	Ürün Kodu		d <sub>0</sub> (mm)	h <sub>1</sub> ≥ (mm)	h <sub>nom</sub> ≥ (mm)	L (mm)	d <sub>s</sub> (mm)	Paket miktarı	
	yeni	eski						(kutu)	(Koli)
F4	94NF	500204	4	30	20	20	2-3	200	12000
F5	95NF	500105	5	35	25	25	2,5-4	100	6000
F6	96NF	500106	6	40	30	30	3,5-5	100	6000
F7	97NF	500207	7	40	30	30	4-5,5	50	3000
F8	98NF	500108	8	55	40	40	4,5-6	100	2700
F10	910NF	500110	10	70	50	50	6-8	50	1350
F12	912NF	500112	12	80	60	60	8-10	25	675
F14	914NF	500114	14	90	70	70	10-12	20	540
F16	916NF	500116	16	100	80	80	12-14	10	270
F20	920NF	500120	20	120	90	90	16	5	135

## STANDART EKSTRA UZUN DÜBEL

FL Vidasız

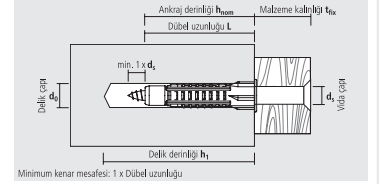
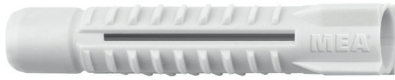


Tip	Ürün Kodu		d <sub>0</sub> (mm)	h <sub>1</sub> ≥ (mm)	h <sub>nom</sub> ≥ (mm)	L (mm)	d <sub>s</sub> (mm)	Paket miktarı	
	yeni	eski						(kutu)	(Koli)
FL 6-10	9660FL	500160	6	70	60	60	3,5-4,5	100	2700
FL 8-80	9880FL	500161	8	90	80	80	4,5-5,5	50	600
FL 10-90	91090FL	500162	10	105	90	90	6-7	25	300

## Çok Amaçlı Dübelller

### ÇOK AMAÇLI DÜBEL

MZ Yakasız

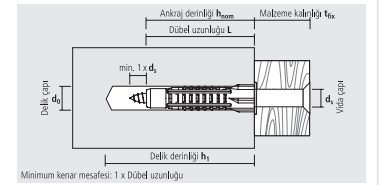


Tip	Ürün Kodu		d <sub>0</sub> (mm)	h <sub>1</sub> ≥ (mm)	h <sub>nom</sub> ≥ (mm)	L (mm)	h <sub>mim</sub> <sup>1</sup> (mm)	d <sub>s</sub> (mm)	Paket miktarı	
	yeni	eski							(kutu)	(Koli)
MZ 6	96MZ	500170	6	40	29	29	7	3-4,5	100	6000
MZ 6-40	9640MZ	500173	6	50	40	40	7	3-4,5	100	4800
MZ 8	98MZ	500172	8	60	48	48	9	4-6	100	1800
MZ 10	910MZ	500174	10	75	59	59	12	6-8	50	900
MZ 12	912MZ	500175	12	85	71	71	15	8-10	50	600
MZ14	914MZ	500176	14	95	75	75	15	10-12	25	300

<sup>1</sup> Min. Alçıpan uygulamaları için uygulama yapılacak malzemenin minimum kalınlığı

### ÇOK AMAÇLI DÜBEL

MZK Yakalı

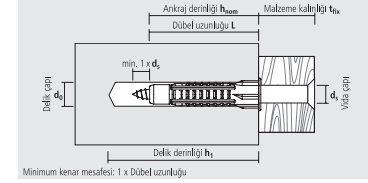


Tip	Ürün Kodu		d <sub>0</sub> (mm)	h <sub>1</sub> ≥ (mm)	h <sub>nom</sub> ≥ (mm)	L (mm)	h <sub>mim</sub> <sup>1</sup> (mm)	d <sub>s</sub> (mm)	Paket miktarı	
	yeni	eski							(kutu)	(Koli)
MZK 6	96MZK	500180	6	40	29	30	7	3-4,5	100	4800
MZK 6-41	9641MZK	500183	6	50	40	41	7	3-4,5	100	2700
MZK 8	98MZK	500182	8	60	48	49	9	4-6	100	1800
MZK 10	910MZK	500184	10	75	59	60	12	6-8	50	900
MZK 12	912MZK	500190	12	85	71	72	15	8-10	50	600
MZK 14	914MZK	500191	14	95	75	76	15	10-12	25	300

<sup>1</sup> Min. Alçıpan uygulamaları için uygulama yapılacak malzemenin minimum kalınlığı

## ÇOK AMAÇLI DÜBEL

**MZK** Yakalı, Yuvarlak Kutuda



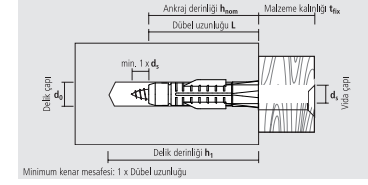
Tip	Ürün Kodu		d <sub>0</sub> (mm)	h <sub>1</sub> ≥ (mm)	h <sub>nom</sub> ≥ (mm)	L (mm)	h <sub>mim</sub> <sup>1</sup> (mm)	d <sub>s</sub> (mm)	Paket miktarı	
	yeni	eski							(kutu)	(koli)
MZK 6-41	9641EXPMZK	500283	6	50	40	41	7,0	3-4,5	200	10
MZK 8	98EXPMZK	500282	8	60	48	49	9,5	4-6	90	10
MZK 10	910EXPMZK	500284	10	75	59	60	12,0	6-8	50	10
MZK 12	912EXPMZK	500290	12	85	71	72	15,0	8-10	25	10

<sup>1</sup> Çakma işlemi yapılacak tabakanın minimum kalınlığı

## Universal Dübeller

### UNİVERSAL DÜBEL

**AZ** Yakasız

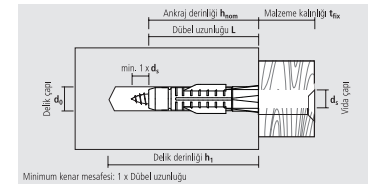
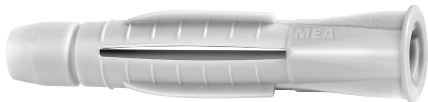


Tip	Ürün Kodu		d <sub>0</sub> (mm)	h <sub>1</sub> ≥ (mm)	h <sub>nom</sub> ≥ (mm)	L (mm)	h <sub>mim</sub> <sup>1</sup> (mm)	d <sub>s</sub> (mm)	Paket miktarı	
	yeni	eski							(kutu)	(koli)
AZ 5	95AZ	501460	5	40	30	30	7,0	3-4	100	4800
AZ 6	96AZ	501462	6	50	37	37	9,5	4-5	100	4800
AZ 8	98AZ	501464	8	60	50	50	12,5	5-6	100	1800
AZ 10	910AZ	501466	10	75	60	60	15,0	7-8	50	900
AZ 12	912AZ	501468	12	85	70	70	18,0	8-10	25	450

<sup>1</sup> Min. Alçıpan uygulamaları için uygulama yapılacak malzemenin minimum kalınlığı

### UNİVERSAL DÜBEL

**AZK** Yakalı



Tip	Ürün Kodu		d <sub>0</sub> (mm)	h <sub>1</sub> ≥ (mm)	h <sub>nom</sub> ≥ (mm)	L (mm)	h <sub>mim</sub> <sup>1</sup> (mm)	d <sub>s</sub> (mm)	Paket miktarı	
	yeni	eski							(kutu)	(koli)
AZK 5	95AZK	501470	5	40	30	31	7,0	3-4	100	4800
AZK 6	96AZK	501472	6	50	37	38	9,5	4-5	100	2700
AZK 8	98AZK	501474	8	60	50	51	12,5	5-6	100	1800
<b>AZK 10</b>	<b>910AZK</b>	501476	10	75	60	61	15,0	7-8	50	900
AZK 12	912AZK	501478	12	85	70	71	18,0	8-10	25	450

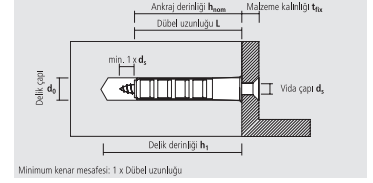
<sup>1</sup> Min. Alçıpan uygulamaları için uygulama yapılacak malzemenin minimum kalınlığı



## Gaz Beton Dübeli

### GAZ BETON DÜBELİ

#### GB



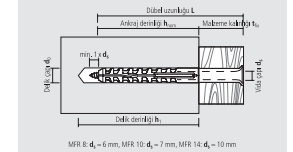
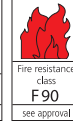
Tip	Ürün Kodu		d <sub>0</sub> * (mm)	h <sub>1</sub> ≥ (mm)	h <sub>nom</sub> ≥ (mm)	L (mm)	d <sub>5</sub> (mm)	Paket miktarı	
	yeni	eski						(kutu)	(Koli)
GB 10**	910GB	502010	10	65	55	55	4,5-6	25	675
GB 12	912GB	502012	12	70	60	60	7-8	20	540
GB 14	914GB	502014	14	90	75	75	10	10	270

\* Tüm GB ürünleri P4 gazbetonlarda daha küçük delik çapına çakılabilir.  
\*\* GB 10 ürün P2 gazbetonlarda delme işlemi yapmadan uygulanabilir.

## Çok Fonksiyonlu Çerçeve Dübelleri

### ÇOK FONKSİYONLU ÇERÇEVE DÜBELİ

MFR 8/10 SB TX, Galvanizli Havşa Başlı Vidalı

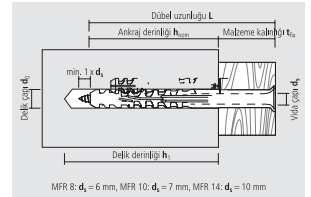


Tip	Ürün Kodu		d <sub>0</sub> (mm)	h <sub>1</sub> ≥ (mm)	h <sub>nom</sub> ≥ (mm)	L (mm)	t <sub>fix</sub> ≤ (mm)	Vidalama ucu	Paket miktarı	
	yeni	eski							(kutu)	(Koli)
8-60*	9860MFRST	-	8	60	50	60	10	TX 30	100	800
8-80*	9880MFRST	-	8	60	50	80	30	TX 30	100	800
8-100*	98100MFRST	-	8	60	50	100	50	TX 30	50	400
8-120*	98120MFRST	-	8	60	50	120	70	TX 30	50	400
10-80*	91080MFRST	500638	10	80	70	80	10	TX 40	50	400
10-100*	910100MFRST	500640	10	80	70	100	30	TX 40	50	400
10-115*	910115MFRST	500642	10	80	70	115	45	TX 40	50	400
10-135*	910135MFRST	500644	10	80	70	135	65	TX 40	50	400
10-160*	910160MFRST	500646	10	80	70	160	90	TX 40	50	400
10-200	910200MFRST	500648	10	80	70	200	130	TX 40	25	200
10-240	910240MFRST	500650	10	80	70	240	170	TX 40	25	200

MFR 8 ETA onaylı değildir. \* Monteli

### ÇOK FONKSİYONLU ÇERÇEVE DÜBELİ

MFR 14 SB TX, Galvanizli Havşa Başlı Vidalı

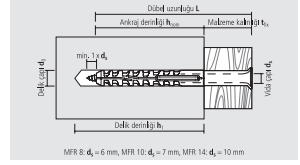


Tip	Ürün Kodu		d <sub>0</sub> (mm)	h <sub>1</sub> ≥ (mm)	h <sub>nom</sub> ≥ (mm)	L (mm)	t <sub>fix</sub> ≤ (mm)	Vidalama ucu	Paket miktarı	
	yeni	eski							(kutu)	(Koli)
14-80*	91480MFRST	500652	14	85	70	80	10	TX 50	25	200
14-110*	914110MFRST	500654	14	85	70	110	40	TX 50	25	200
14-140*	914140MFRST	500656	14	85	70	140	70	TX 50	25	200
14-170	914170MFRST	500658	14	85	70	170	100	TX 50	25	200
14-200	914200MFRST	500660	14	85	70	200	130	TX 50	25	200
14-230	914230MFRST	500662	14	85	70	230	160	TX 50	25	200
14-270	914270MFRST	500664	14	85	70	270	200	TX 50	25	-

\* Monteli

## ÇOK FONKSİYONLU ÇERÇEVE DÜBELİ

### MFR SB SSKS, Galvanizli Altıgen Başlı Vidalı



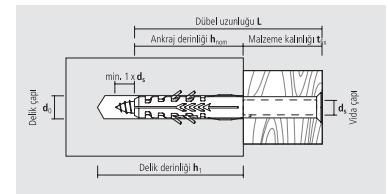
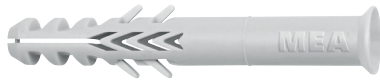
Tip	Ürün Kodu		d <sub>0</sub> (mm)	h <sub>1</sub> ≥ (mm)	h <sub>nom</sub> ≥ (mm)	L (mm)	t <sub>fix</sub> ≤ (mm)	Vidalama ucu	Paket miktarı	
	yeni	eski							(kutu)	(Koli)
8-60*	9860MFRSB	-	8	60	50	60	10	SW10/TX30	100	800
8-80*	9880MFRSB	-	8	60	50	80	30	SW10/TX30	100	800
8-100*	98100MFRSB	-	8	60	50	100	50	SW10/TX30	50	400
8-120*	98120MFRSB	-	8	60	50	120	70	SW10/TX30	50	400
10-80*	91080MFRSB	500666	10	80	70	80	10	SW13/TX40	50	400
10-100*	910100MFRSB	500668	10	80	70	100	30	SW13/TX40	50	400
10-115*	910115MFRSB	500670	10	80	70	115	45	SW13/TX40	50	400
10-135*	910135MFRSB	500672	10	80	70	135	65	SW13/TX40	50	400
10-160*	910160MFRSB	500674	10	80	70	160	90	SW13/TX40	50	400
10-200	910200MFRSB	500676	10	80	70	200	130	SW13/TX40	25	200
10-240	910240MFRSB	500678	10	80	70	240	170	SW13/TX40	25	200
14-80*	91480MFRSB	500680	14	85	70	80	10	SW17/TX50	25	200
14-110*	914110MFRSB	500694	14	85	70	110	40	SW17/TX50	25	200
14-140*	914140MFRSB	500692	14	85	70	140	70	SW17/TX50	25	200
14-170	914170MFRSB	500686	14	85	70	170	100	SW17/TX50	25	200
14-200	914200MFRSB	500688	14	85	70	200	130	SW17/TX50	25	200
14-230	914230MFRSB	500690	14	85	70	230	160	SW17/TX50	25	200
14-270	914270MFRSB	500800	14	85	70	270	200	SW17/TX50	25	-

MFR 8 ETA onaylı değildir. \* monteli

## Çerçeve Dübelleri

### ÇERÇEVE DÜBELİ

R8 Vidasız

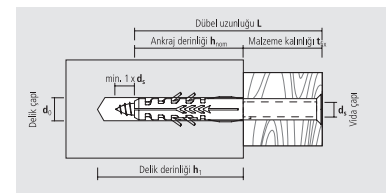


Tip	Ürün Kodu		d <sub>0</sub> (mm)	h <sub>1</sub> ≥ (mm)	h <sub>nom</sub> ≥ (mm)	L (mm)	t <sub>fix</sub> ≤ (mm)	d <sub>s</sub> (mm)	Paket miktarı	
	yeni	eski							(kutu)	(Koli)
8-60*	9860R	501086	8	55	40	60	20	4,5-6	50	900
8-80*	9880R	501088	8	55	40	80	40	4,5-6	50	900
8-100*	98100R	501087	8	55	40	100	60	4,5-6	50	600

\* Onaysız

### ÇERÇEVE DÜBELİ

R8 SP Vidalı (PZ3)

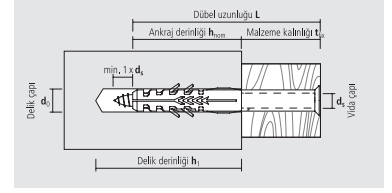


Tip	Ürün Kodu		d <sub>0</sub> (mm)	h <sub>1</sub> ≥ (mm)	h <sub>nom</sub> ≥ (mm)	L (mm)	t <sub>fix</sub> ≤ (mm)	d <sub>s</sub> (mm)	Paket miktarı	
	yeni	eski							(kutu)	(Koli)
8-60 SP*	9860RSZ	501186	8	55	40	60	20	5,5	25	450
8-80 SP*	9880RSZ	501188	8	55	40	80	40	5,5	25	450
8-100 SP*	98100RSZ	501187	8	55	40	100	60	5,5	50	400

\* Onaysız

## ÇERÇEVE DÜBELİ

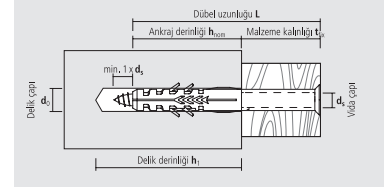
R10 Vidasız



Tip	Ürün Kodu		d <sub>0</sub> (mm)	h <sub>1</sub> ≥ (mm)	h <sub>nom</sub> ≥ (mm)	L (mm)	t <sub>fix</sub> ≤ (mm)	d <sub>s</sub> (mm)	Paket miktarı	
	yeni	eski							(kutu)	(Koli)
10-60	91060R	501089	10	60	50	60	10	6-7	100	800
10-80	91080R	501090	10	60	50	80	30	6-7	100	800
10-100	910100R	501091	10	60	50	100	50	6-7	100	800
10-115	910115R	501092	10	60	50	115	65	6-7	100	800
10-135	910135R	501093	10	60	50	135	85	6-7	50	400
10-160	910160R	501094	10	60	50	160	110	6-7	50	400
10-200	910200R	501095	10	60	50	200	150	6-7	50	400
10-240	910240R	501096	10	60	50	240	190	6-7	50	400

## ÇERÇEVE DÜBELİ

R10 SSP Vidalı (PZ4)

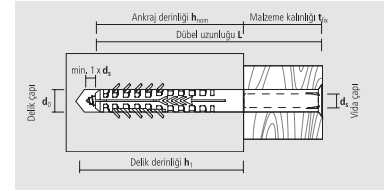


Tip	Ürün Kodu		d <sub>0</sub> (mm)	h <sub>1</sub> ≥ (mm)	h <sub>nom</sub> ≥ (mm)	L (mm)	t <sub>fix</sub> ≤ (mm)	d <sub>s</sub> (mm)	Paket miktarı	
	yeni	eski							(kutu)	(Koli)
10-80 SSP	91080RSZ	501208	10	60	50	80	30	7	100	800
10-100 SSP	910100RSZ	501210	10	60	50	100	50	7	50	400
10-115 SSP	910115RSZ	501215	10	60	50	115	65	7	50	400
10-135 SSP	910135RSZ	501235	10	60	50	135	85	7	50	400
10-160 SSP	910160RSZ	501260	10	60	50	160	110	7	50	400

## Boşluklu Çerçeve Dübelleri

### BOŞLUKLU ÇERÇEVE DÜBELİ

HBR Vidasız

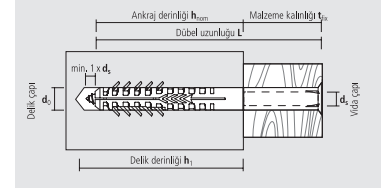


Tip	Ürün Kodu		d <sub>0</sub> (mm)	h <sub>1</sub> ≥ (mm)	h <sub>nom</sub> ≥ (mm)	L (mm)	t <sub>fix</sub> ≤ (mm)	d <sub>s</sub> (mm)	Paket miktarı	
	yeni	eski							(kutu)	(Koli)
8-80*	9880HBR	500431	8	80	70	80	10	5-6	50	900
10-100	910100HBR	500433	10	100	90	100	10	6-7	100	800
10-115	910115HBR	500432	10	100	90	115	25	6-7	100	800
10-135	910135HBR	500435	10	100	90	135	45	6-7	50	400
10-160	910160HBR	500437	10	100	90	160	70	6-7	50	400
10-200	910200HBR	500440	10	100	90	200	110	6-7	50	400
10-240	910240HBR	500442	10	100	90	240	150	6-7	50	400

\* Onaysız

## BOŞLUKLU ÇERÇEVE DÜBELİ

HBR 8 SP Vidalı (PZ3)

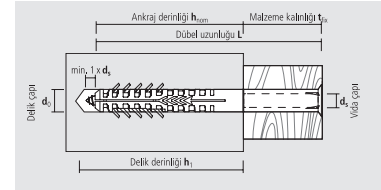


Tip	Ürün Kodu		d <sub>0</sub> (mm)	h <sub>1</sub> ≥ (mm)	h <sub>nom</sub> ≥ (mm)	L (mm)	t <sub>fix</sub> ≤ (mm)	d <sub>s</sub> (mm)	Paket miktarı	
	yeni	eski							(kutu)	(Koli)
8-80SP*	9880HBRSZ	500208	8	80	70	80	10	5,5	25	450

\* Onaysız

## BOŞLUKLU ÇERÇEVE DÜBELİ

HBR 10 SSP Vidalı (PZ4)

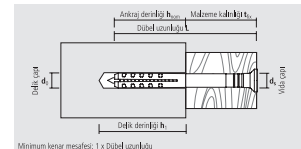


Tip	Ürün Kodu		d <sub>0</sub> (mm)	h <sub>1</sub> ≥ (mm)	h <sub>nom</sub> ≥ (mm)	L (mm)	t <sub>fix</sub> ≤ (mm)	d <sub>s</sub> (mm)	Paket miktarı	
	yeni	eski							(kutu)	(Koli)
10-100 SSP	910100HBRSZ	500310	10	100	90	100	10	7	50	400
10-115 SSP	910115HBRSZ	500311	10	100	90	115	25	7	50	400
10-135 SSP	910135HBRSZ	500313	10	100	90	135	45	7	50	400
10-160 SSP	910160HBRSZ	500316	10	100	90	160	70	7	50	400

## Çakmalı Dübelller

### ÇAKMALI DÜBEL

NPC, NP, Galvanizli Monteli Havşa Başlı

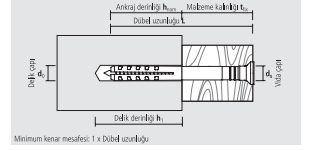


Tip	Ürün Kodu		d <sub>0</sub> (mm)	h <sub>1</sub> ≥ (mm)	h <sub>nom</sub> ≥ (mm)	L (mm)	t <sub>fix</sub> ≤ (mm)	Paket miktarı	
	yeni	eski						(kutu)	(Koli)
NPC 5-35	9535NPC	-	5	35	25	35	10	100	1800
NPC 5-50	9550NPC	-	5	35	25	50	25	100	1800
NPC 6-35	9635NPC	-	6	40	30	35	5	100	1800
NPC 6-40	9640NPC	-	6	40	30	40	10	100	1800
NPC 6-50	9650NPC	-	6	40	30	50	20	50	900
NPC 6-60	9660NPC	-	6	40	30	60	30	50	900
NPC 6-80	9680NPC	-	6	40	30	80	50	50	900
NP 8-60	9860NP	501509	8	50	40	60	20	50	600
NP 8-80	9880NP	511511	8	50	40	80	40	50	600
NP 8-100	98100NP	501513	8	50	40	100	60	50	600
NP 8-120	98120NP	501515	8	50	40	120	80	50	400
NP 8-135	98135NP	501517	8	50	40	135	95	50	400



## ÇAKMALI DÜBEL

NP, galvanizli Monteli Düz Başlı

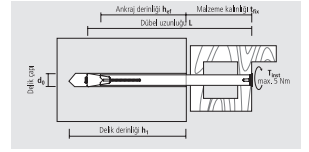


Tip	Ürün Kodu		d <sub>0</sub> (mm)	h <sub>1</sub> ≥ (mm)	h <sub>nom</sub> ≥ (mm)	L (mm)	t <sub>fix</sub> ≤ (mm)	Paket miktarı	
	yeni	eski						(kutu)	(Koli)
NP 5-25	9525NP	-	5	25	23	25	2	200	3600
NP 5-35	9535NP	501501	5	35	25	35	10	100	1800
NP 5-50	9550NP	501503	5	35	25	50	25	100	1800
NP 6-35	9635NP	501504	6	40	30	35	5	100	1800
NP 6-40	9640NP	501505	6	40	30	40	10	100	1800
NP 6-50	9650NP	501502	6	40	30	50	20	50	900
NP 6-60	9660NP	501507	6	40	30	60	30	50	900
NP 6-70	9670NP	501508	6	40	30	70	40	50	600
NP 6-80	9680NP	501506	6	40	30	80	50	50	900

## Metal Kasa Dübeli

### METAL KASA DÜBELİ

MR Havza Başlı Vida ile (PZ3)



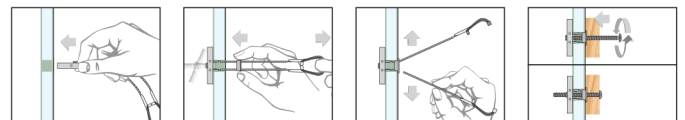
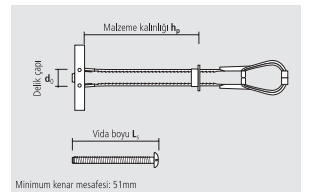
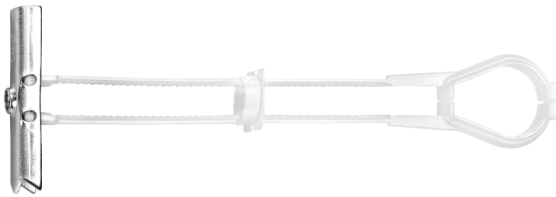
Tip	Ürün Kodu		d <sub>0</sub> (mm)	h <sub>1</sub> ≥ (mm)	h <sub>ef</sub> ≥ (mm)	L' (mm)	t <sub>fix</sub> ≤ (mm)	Paket miktarı	
	yeni	eski						(kutu)	(Koli)
MR 10-72	91072MR	504057	10	50	30	72	42	100	600
MR 10-92	91092MR	504061	10	50	30	92	62	100	400
MR 10-112	910112MR	504063	10	50	30	112	82	100	400
MR 10-132	910132MR	504065	10	50	30	132	102	100	400
MR 10-152	910152MR	504067	10	50	30	152	122	100	400
MR 10-182	910182MR	504066	10	50	30	182	152	100	400
MR 10-202	910202MR	-	10	50	30	202	172	100	400

<sup>1</sup> Uzunluk

## Universal Boşluk Dübelleri

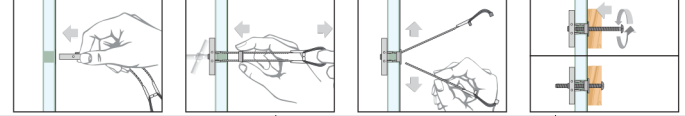
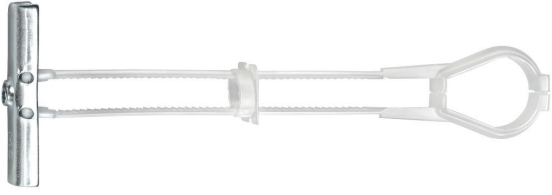
### VİDASIZ UNİVERSAL BOŞLUK DÜBELİ

BT



Tip	Ürün Kodu		d <sub>0</sub> (mm)	h <sub>p</sub> min-max (mm)	Vida ölçüsü (mm)	Paket miktarı	
	yeni	eski				(kutu)	(Koli)
BT M4	94BT	-	13	10-70	M4	40	320
BT M5	95BT	-	13	10-70	M5	30	240
BT M6	96BT	-	13	10-70	M6	30	240
BT M8	98BT	-	19	10-70	M8	20	160

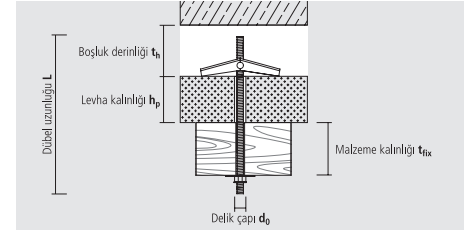
## VİDALI UNİVERSAL BOŞLUK DÜBELİ BTL, BTK



Tip	Ürün Kodu		d <sub>0</sub> (mm)	h <sub>p</sub> min-max (mm)	Vida ölçüsü (mm)	L <sub>s</sub> (mm)	Vidalama	Paket miktarı	
	yeni	eski						(kutu)	(Koli)
BT M4	94BTLO	-	13	10-70	M4	50	PZ2/slot	40	320
BT M5	95BTLO	-	13	10-70	M5	62	PZ2/slot	30	240
BT M6	96BTLO	-	13	10-70	M6	62	PZ2/slot	30	240
BT M8	98BTK	-	19	10-70	M8	60	SW13/Hex	20	160

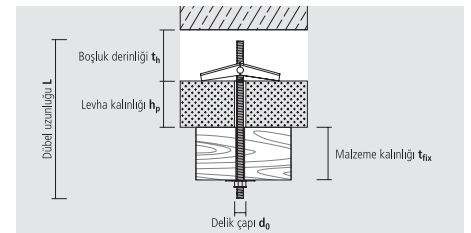
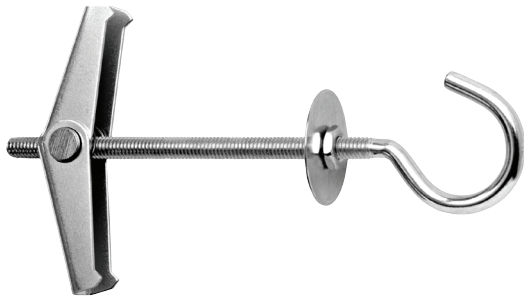
## Yaylı Alçıpan Dübelleri

### PULLU ve SOMUNLU YAYLI ALÇIPAN DÜBELİ FK-S



Tip	Ürün Kodu		d <sub>0</sub> (mm)	h <sub>p</sub> + t <sub>fix</sub> ≤ (mm)	Vida ölçüsü (mm)	L <sub>s</sub> (mm)	t <sub>h</sub> ≥ (mm)	Paket miktarı	
	yeni	eski						(kutu)	(Koli)
3x85	9390FKS	503030	11	65	M3	85	28	25	400
4x90	9495FKS	503031	14	65	M4	90	35	25	400

### KANCA BAŞLI YAYLI ALÇIPAN DÜBELİ FK-HS

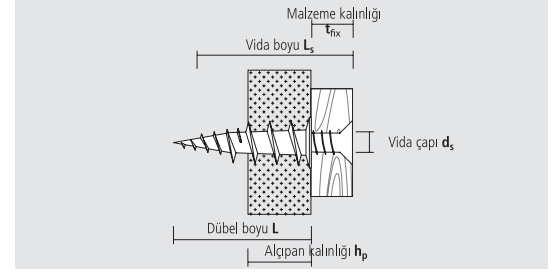


Tip	Ürün Kodu		d <sub>0</sub> (mm)	h <sub>p</sub> + t <sub>fix</sub> ≤ (mm)	Vida ölçüsü (mm)	L <sub>s</sub> (mm)	t <sub>h</sub> ≥ (mm)	Paket miktarı	
	yeni	eski						(kutu)	(Koli)
3x100	9385FKHS	503050	11	40	M3	100	28	25	400
4x95	94100FKHS	503051	14	30	M4	95	35	25	400

## Alçıpan Dübelleri

### ALÇIPAN DÜBELİ

GKD Nylon

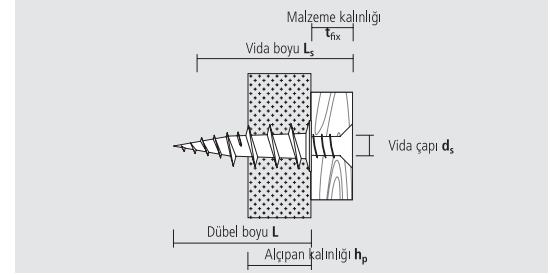


Tip	Ürün Kodu		L (mm)	h <sub>p</sub> max (mm)	d <sub>s</sub> min-max (mm)	L <sub>s</sub> ≥ (mm)	Paket miktarı	
	yeni	eski					(kutu)	(Koli)
GKD	9GKD	500890	35	2x12,5	3-4,5	22-t <sub>fix</sub>	50	2400

\* Paket

### ALÇIPAN DÜBELİ

GKDZ Metal



Tip	Ürün Kodu		L (mm)	h <sub>p</sub> max (mm)	d <sub>s</sub> min-max (mm)	L <sub>s</sub> ≥ (mm)	Paket miktarı	
	yeni	eski					(kutu)	(Koli)
GKDZ*	9GKDZ	508155	28	2x12,5	4-5	22-t <sub>fix</sub>	100	1200
GKDZ	9GKDZ50	-	28	2x12,5	4-5	22-t <sub>fix</sub>	50	2400

\* Paket

## Uygulama Pensesi

### MZA 100

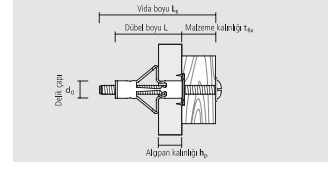


Uygulama pensesi MZA 100			Fiyat	Paket miktarı	
Tip	Ürün Kodu		ğ/ adet	(kutu)	(Koli)
	yeni	eski			
MZA 100	9MZA00	508176		1	-

## Boşluk Dübelleri

### METAL BOŞLUK DÜBELİ

#### HRM



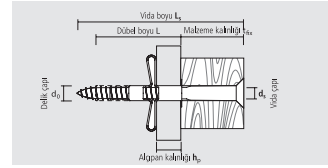
Profesyonel paket

Tip	Ürün Kodu	d <sub>0</sub> (mm)	h <sub>p</sub> min-max (mm)	Vida ölçüsü (mm)	L <sub>s</sub> (mm)	L (mm)	t <sub>fix</sub> (mm)	Paket miktarı	
								(kutu)	(Koli)
HRM 4-20	9420 HRM	8	3-18	M4	52	46	43-28	100	1200
HRM 4-24	9424 HRM	8	18-24	M4	58	52	34-28	100	1000
HRM 4-38	9438 HRM	8	32-38	M4	65	59	34-28	100	1000
HRM 5-16	9516 HRM	11	3-16	M5	58	52	49-36	100	500
HRM 5-32	9532 HRM	11	14-32	M5	71	65	51-33	100	500
HRM 5-45	9545 HRM	11	32-45	M5	88	80	48-35	100	900
HRM 6-16	9616 HRM	13	3-16	M6	58	52	49-36	100	500
HRM 6-32	9632 HRM	13	14-32	M6	71	65	51-33	100	900
HRM 6-45	9645 HRM	13	32-45	M6	88	80	48-35	100	600
HRM 8-16*	9816 HRM	13	3-16	M8	61	53	50-37	100	300
HRM 8-32*	9832 HRM	13	16-32	M8	73	66	50-34	100	300

\* Altıgen başlı vida SW13

### NYLON BOŞLUK DÜBELİ

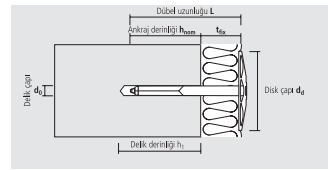
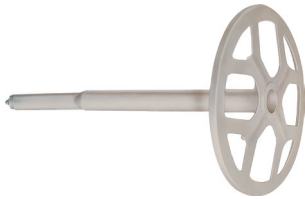
#### HR



Tip	Ürün Kodu		d <sub>0</sub> (mm)	h <sub>p</sub> min-max (mm)	d <sub>s</sub> (mm)	L (mm)	Paket miktarı	
	yeni	eski					(kutu)	(Koli)
HR 6-30	9630 HR	500863	6	3-14	3,5	30	100	4800
HR 8-40	9840 HR	500884	8	10-16	4,0	40	50	2400

## Yalıtım Malzemesi Tutucu

#### DSH



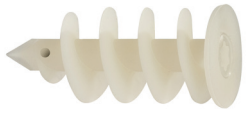
Tip	Ürün Kodu		d <sub>0</sub> (mm)	h <sub>s</sub> ≥ (mm)	h <sub>nom</sub> ≥ (mm)	L (mm)	d <sub>d</sub> (mm)	t <sub>fix</sub> (mm)	Paket miktarı	
	yeni	eski							(kutu)	(Koli)
DSH 8-20	9860DSH	502610	8	40	30	60	82	20-30	100	-
DSH 8-40	9880DSH	502620	8	40	30	80	82	40-50	100	-
DSH 8-60	98100DSH	502630	8	40	30	100	82	60-70	100	-
DSH 8-80	98120DSH	502640	8	40	30	120	82	80-90	100	-
DSH 8-100	98140DSH	502650	8	40	30	140	82	100-110	100	-

ELEKTRİKLİ  
EL ALETLERİJENERATÖR  
MOTORHAVALI  
ALETLERENDÜSTRİYEL  
ÜRÜNLERKALDIRMA  
GERDİRMEBAHÇE  
ALETLERİKESME  
VİDA - DÜBELÖLÇÜ  
ALETLERİEL ALETLERİ  
DİĞER ÜRÜN.YAPIŞTIRMA  
İZOLASYON

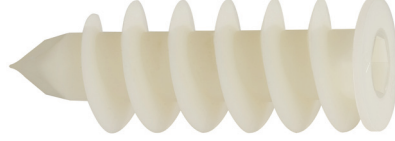
İŞ GÜVENLİĞİ

## İzolasyon Dübeli

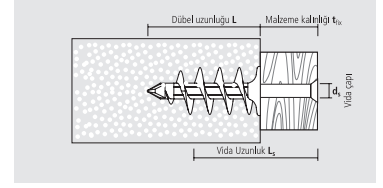
### IPL



IPL 60



IPL 95



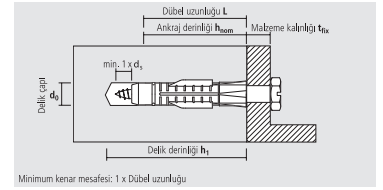
Tip	Ürün Kodu		L (mm)	Drive	d <sub>s</sub> (mm)	L <sub>s</sub> (mm)	Paket miktarı	
	yeni	eski					(kutu)	(Koli)
IPL 60	960IPL	-	58	TX 40	4,5-5,0	30+t <sub>fix</sub>	25	300
IPL 95	995IPL	-	95	SW 13	8/10/M8	40+t <sub>fix</sub>	25	200

IPL 60 kafa çapı Ø 25mm

IPL 95 kafa çapı Ø 32 mm 1 x M8 x 30 vida dahildir.

## Klozet Montaj Seti

### WC



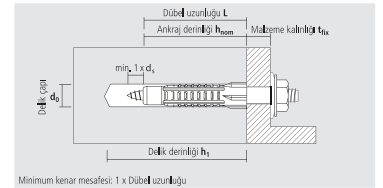
Minimum kenar mesafesi: 1 x Döbel uzunluđu

Tip	Ürün Kodu		Set içeriđi	d <sub>0</sub> (mm)	h <sub>1</sub> ≥ (mm)	L (mm)	t <sub>fix</sub> ≤ (mm)	(Set)
	yeni	eski						
Beyaz	91WC	502290	2 Döbel AZ 8 2 Altıgen başlı princi vida 6x85 2 Conta 2 Beyaz kapak	8	60	50	30	50
Beyaz/Krom	9BFWC	502292	2 Döbel AZ 8 2 Altıgen başlı princi vida 6x85 2 Conta 2 Beyaz Kapak 2 Beyaz Krom	8	60	50	30	50

Ürünler plastik poşet içerisinde sevk edilir.

## Lavabo Montaj Seti

### WT



Minimum kenar mesafesi: 1 x Döbel uzunluđu

Tip	Ürün Kodu		Set içeriđi	d <sub>0</sub> (mm)	h <sub>1</sub> ≥ (mm)	L (mm)	t <sub>fix</sub> ≤ (mm)	(Set)
	yeni	eski						
10 x 140	910140WT	502288	2 Döbel AZ 14 2 Askı vidası M10 x 140 2 Plastik conta 2 Pul 35 x 11 x 1,5 2 Somun M10	14	85	75	40	50

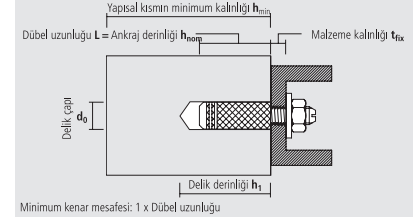
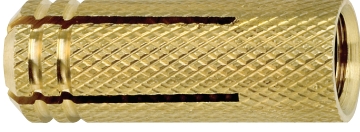
Ürünler plastik poşet içerisinde sevk edilir.



## Pirinç Çakmalı Dübel

### ME

Pirinç

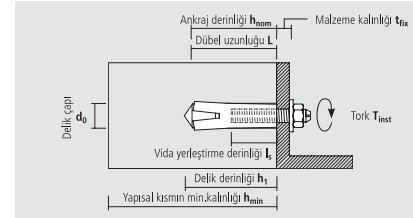
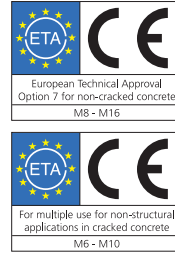
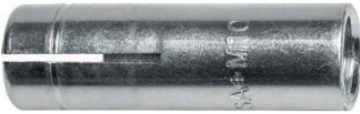


Tip	Ürün Kodu		d <sub>0</sub> (mm)	h <sub>1</sub> ≥ (mm)	L=h <sub>nom</sub> (mm)	Vida Ölçüsü	Paket miktarı	
	yeni	eski					(kutu)	(Koli)
ME 4	9L4ME	503110	5	18	16	M4	100	3200
ME 5	9L5ME	503115	6	22	20	M5	100	3200
ME 6	9L6ME	503120	8	27	23	M6	100	4000
ME 8	9L8ME	503125	10	35	30	M8	50	2000
ME 10	9L10ME	503130	12	39	34	M10	50	1500
ME 12	9L12ME	503135	15	46	40	M12	25	750
ME 14	9L14ME	503140	18	48	42	M14	25	350
ME 16	9L16ME	503145	20	50	44	M16	25	350

## Galvanizli Çakmalı Dübel

### SA PLUS

Galvanizli



### SA plus, Galvanizli

Tip	Ürün Kodu		d <sub>0</sub> (mm)	h <sub>1</sub> (mm)	L (mm)	l <sub>s</sub> min-max* (mm)	Vida Ölçüsü	Paket miktarı	
	yeni	eski						(kutu)	(Koli)
SA plus 6	96SAP	-	8	27	25	6-11	M6	100	1800
SA plus 8	98SAP	-	10	32	30	8-13	M8	100	1000
SA plus 10	910SAP	-	12	43	40	10-16	M10	50	500
SA plus 12	912SAP	-	15	54	50	12-23	M12	50	300
SA plus 16	916SAP	-	20	70	65	16-32	M16	25	150

\* Min / max vida yerleştirme derinliği

## Çakmalı Dübel SA PLUS

### ESW

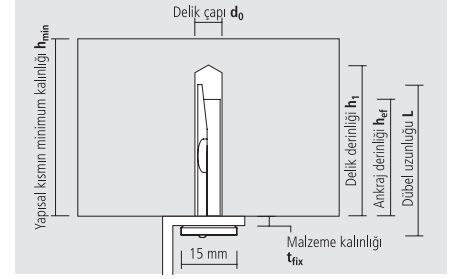
SA Plus için



Tip	Ürün Kodu		Açıklama	Fiyat ğ/ adet	Paket miktarı (Paket)
	yeni	eski			
ESW 6	96ESW	-	96SAP için uygundur		1
ESW 8	98ESW	504648	98SAP için uygundur		1
ESW 10	910ESW	504650	910SAP için uygundur		1
ESW 12	912ESW	504652	912SAP için uygundur		1
ESW 16	916ESW	504656	916SAP için uygundur		1

## Tavan Çivisi

### MDA-T

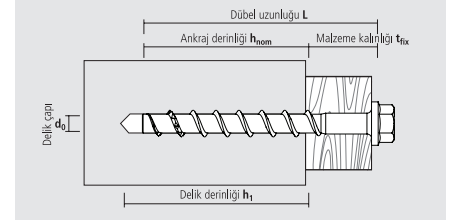


Tip	Ürün Kodu		d <sub>0</sub> (mm)	h <sub>1</sub> ≥ (mm)	h <sub>ef</sub> ≥ (mm)	L (mm)	t <sub>fix</sub> ≥ (mm)	Paket miktarı	
	yeni	eski						(kutu)	(Koli)
MDA-T 6/5	96MDAT	507040	6	42	32	43	4,5	100	1800
MDA-T 6/35	9635MDAT	-	6	42	32	73	35	100	1200

## Beton Vidası

### BTS B

Altıgen Başlı



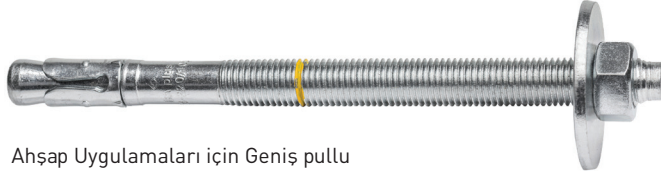
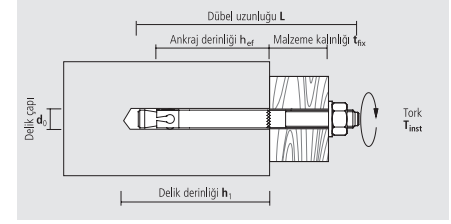
Tip	Ürün Kodu		d <sub>0</sub> (mm)	h <sub>1</sub> ≥ (mm)	h <sub>nom</sub> ≥ (mm)	L (mm)	t <sub>fix</sub> ≥ (mm)	Drive	Paket miktarı	
	yeni	eski							(kutu)	(Koli)
10-90/5	9ZG1090BTSB	91090TSM	10	95	85	90	5	SW 15	40	200
10-100/15	9ZG10100BTSB	910100TSM	10	95	85	100	15	SW 15	40	200
10-120/35	9ZG10120BTSB	910120TSM	10	95	85	120	35	SW 15	40	200
14-80/-	9ZG1480BTSB	-	14	-	-	80	-	SW 21	20	100



## Klipsli Dübel

### BA PLUS

Galvanizli



Ahşap Uygulamaları için Geniş pullu

Tip	Ürün Kodu		d <sub>0</sub> (mm)	h <sub>1</sub> ≥ (mm)	h <sub>ef</sub> ≥ (mm)	L (mm)	t <sub>fix</sub> ≤ (mm)	Vida Ölçüsü	Paket miktarı	
	yeni	eski							(kutu)	(Koli)
8-50/5 <sup>1)</sup>	9850BAP	-	8	40	25	50	5	M8	100	500
8-75/10	9875BAP	-	8	60	45	75	10	M8	50	250
8-85/20	9885BAP	-	8	60	45	85	20	M8	50	250
8-95/30	9895BAP	-	8	60	45	95	30	M8	50	250
8-115/50	98115BAP	-	8	60	45	115	50	M8	40	200
8-135/70	98135BAP	-	8	60	45	135	70	M8	40	200
10-60/10 <sup>1)</sup>	91060BAP	-	10	42	27	60	10	M10	50	250
10-75/10 <sup>1)</sup>	91075BAP	-	10	55	40	75	10	M10	50	250
10-85/10	91085BAP	-	10	65	50	85	10	M10	40	200
10-92/17	91092BAP	-	10	65	50	92	17	M10	40	200
10-105/30	910105BAP	-	10	65	50	105	30	M10	25	125
10-125/50	910125BAP	-	10	65	50	125	50	M10	25	125
10-145/70	910145BAP	-	10	65	50	145	70	M10	25	125
10-175/100	910175BAP	-	10	65	50	175	100	M10	25	125
10-215/140*	910215BAP	-	10	65	50	215	140	M10	25	100
12-70/2 <sup>1)</sup>	91270BAP	-	12	58	38	70	2	M12	40	200
12/110/10	912110BAP	-	12	90	70	110	10	M12	20	100
12-120/20	912120BAP	-	12	90	70	120	20	M12	20	100
12-130/30	912130BAP	-	12	90	70	130	30	M12	20	100
12-150/50	912150BAP	-	12	90	70	150	50	M12	20	100
12-180/80	912180BAP	-	12	90	70	180	80	M12	20	100
12-200/100*	912200BAP	-	12	90	70	200	100	M12	20	80
12-220/120*	912220BAP	-	12	90	70	220	120	M12	20	80
12-240/140*	912240BAP	-	12	90	70	240	140	M12	20	80
12-260/160*	912260BAP	-	12	90	70	260	160	M12	20	80
12-300/200*	912300BAP	-	12	90	70	300	200	M12	15	60
12-320/220*	912320BAP	-	12	90	70	320	220	M12	15	60
16-95/10 <sup>1)</sup>	91695BAP	-	16	75	50	95	10	M16	15	75
16-135/15	916135BAP	-	16	110	85	135	15	M16	10	50
16-150/30	916150BAP	-	16	110	85	150	30	M16	10	50
16-180/60	916180BAP	-	16	110	85	180	60	M16	10	50
16-200/80	916200BAP	-	16	110	85	200	80	M16	10	50
16-220/100*	916220BAP	-	16	110	85	220	100	M16	10	40
16-270/150*	916270BAP	-	16	110	85	270	150	M16	10	40
16-320/200*	916320BAP	-	16	110	85	320	200	M16	10	40

<sup>1)</sup> Onaysız

\* Ahşap uygulamaları için uygundur. DIN440